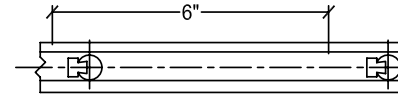
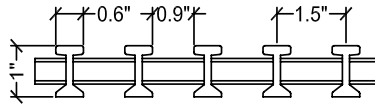


Product Group: Pultruded Fiberglass Grating

1" Deep I-Bearing Bar (I 10-60)

1" Thick / 60% Open

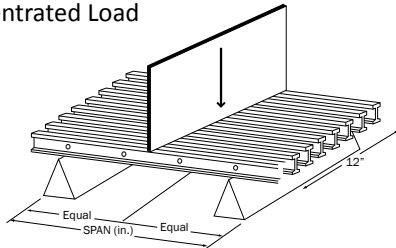


Span (inches)	CONCENTRATED LOAD in lbs/ft of width								Max Load	Apparent EI x 10 ⁶ (lb-in ²)
	50	100	150	200	250	500	1000	2000		
12	0.002	0.003	0.005	0.007	0.008	0.016	0.033	0.065	5755	1.10
18	0.004	0.009	0.013	0.018	0.022	0.044	0.088	0.176	3850	1.38
24	0.009	0.019	0.028	0.037	0.047	0.094	0.187	0.374	2888	1.54
30	0.017	0.035	0.052	0.069	0.086	0.173	0.345	0.690	2310	1.63
36	0.029	0.059	0.088	0.117	0.146	0.293	0.586		1925	1.66
42	0.046	0.092	0.138	0.184	0.230	0.459			1650	1.68
48	0.068	0.136	0.203	0.271	0.339	0.678			1444	1.70
54	0.095	0.191	0.286	0.381	0.477				1283	1.72
60	0.129	0.259	0.388	0.517	0.647				1155	1.74
66	0.171	0.342	0.513	0.685					1050	1.75
72	0.221	0.442	0.663						962	1.76

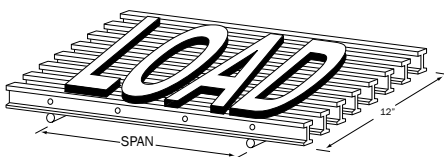
Span (inches)	UNIFORM LOAD in lbs/ft ²								Max Load	Apparent EI x 10 ⁶ (lb-in ²)
	50	100	150	200	250	500	1000	2000		
12	0.001	0.002	0.003	0.004	0.005	0.010	0.020	0.041	7944	1.10
18	0.004	0.008	0.012	0.017	0.021	0.041	0.083	0.165	5296	1.38
24	0.012	0.023	0.035	0.047	0.058	0.117	0.234	0.468	2935	1.54
30	0.027	0.054	0.081	0.108	0.135	0.270	0.539		1845	1.63
36	0.055	0.110	0.165	0.220	0.274	0.549			1281	1.66
42	0.100	0.201	0.301	0.402	0.502				943	1.68
48	0.169	0.339	0.508	0.678					721	1.70
54	0.268	0.536							571	1.72
60	0.404								514	1.74

Properties Per Foot of Width	# of Bars	Load Bar Depth	Bar Centers	Weight/sq ft
A = 2.44 in ² I = 0.31 in ⁴ S = 0.62 in ³	8	1"	1.5"	2.47

Concentrated Load



Uniform Load



- These tables were developed in accordance with the test method developed by the Fiberglass Grating Manufacturers Council (FGMC) of the American Composites Manufacturers Association (ACMA) for the Fiberglass Grating Standard.
- The designer should not exceed MAXIMUM RECOMMENDED load at any time. MAXIMUM LOAD represents a factor of safety of 2:1 for pultruded grating on ULTIMATE CAPACITY. ULTIMATE CAPACITY represents MAX LOAD observed at initial fracture.
- Walking loads for maintenance traffic are typically a live load of 50 PSF. Deflections for worker comfort are typically limited to 0.375" (3/8") or SPAN divided by 120 under full live load. For a firmer feel under full live load or a line load 250 lbs/ft of width, limit deflections to 0.25" (1/4") or SPAN divided by 200.
- The loads represented are for STATIC LOAD CONDITIONS at ambient temperature. Deflections for impact loads or dynamic loads will MULTIPLY the deflections shown by 2. Long term loads will result in added deflection due to creep in the material and will require higher factors of safety to ensure acceptable performance.
- Deflections are limited to 0.5" (1/2") as recommended by the Fiberglass Grating Manufacturers Council of the American Composites Manufacturers Association.