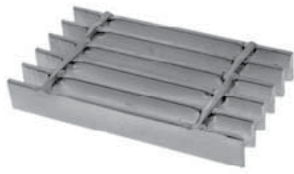


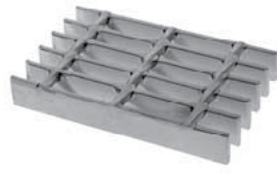
## 10-W-4, 10-W-2 & 10-P-4, 10-P-2 Steel Bar Grating

### Welded Close-Mesh

5/8" Center to Center of Bearing Bars



**10-W-4**  
Cross Rods 4" C/C



**10-W-2**  
Cross Rods 2" C/C

### Press-Locked Close Mesh

5/8" Center to Center of Bearing Bars



**10-P-4**  
Cross Bars 4" C/C



**10-P-2**  
Cross Bars 2" C/C

### Load & Deflection Table

Bar Size	Symbol	Approx. Weight psf	Sec mod Per Ft of Width	SPAN (Length of Bearing Bar)																	
				2'-0"	2'-6"	3'-0"	3'-6"	4'-0"	4'-6"	5'-0"	5'-6"	6'-0"	6'-6"								
3/4" x 1/8"	W	6.8	0.225	U	675	432	300	220	169	133	108										
	P	7.2		D	0.099	0.155	0.223	0.304	0.397	0.503	0.621										
	10-2-32	W		7.3	C	675	540	450	386	338	300	270									
3/4" x 3/16"	P	8.1	0.338	D	0.079	0.124	0.179	0.243	0.318	0.402	0.497										
	10-4-33	W		9.9	U	1013	648	450	331	253	200	162									
	10-2-33	P		10.7	D	0.099	0.155	0.223	0.304	0.397	0.503	0.621									
1" x 1/8"	W	10.5	0.400	C	1013	810	675	579	506	450	405										
	10-4-42	P		12.2	D	0.079	0.124	0.179	0.243	0.318	0.402	0.497									
	10-2-42	W		8.8	U	1200	768	533	392	300	237	192									
1" x 3/16"	P	9.2	0.600	D	0.074	0.116	0.168	0.228	0.298	0.377	0.466										
	10-4-43	W		9.4	C	1200	960	800	686	600	533	480									
	10-2-43	P		10.2	D	0.060	0.093	0.134	0.182	0.238	0.302	0.372									
1-1/4" x 1/8"	W	13.0	0.625	U	1800	1152	800	588	450	356	288										
	10-4-52	P		13.8	D	0.074	0.116	0.168	0.228	0.298	0.377	0.466									
	10-2-52	W		13.6	C	1800	1440	1200	1029	900	800	720									
1-1/4" x 3/16"	P	15.3	0.938	D	0.060	0.093	0.134	0.182	0.238	0.302	0.372										
	10-4-53	W		10.9	U	1875	1200	833	612	469	370	300									
	10-2-53	P		11.6	D	0.060	0.093	0.134	0.182	0.238	0.302	0.372									
1-1/2" x 1/8"	W	11.4	0.900	C	1875	1500	1250	1071	938	833	750										
	10-4-62	P		12.9	D	0.048	0.074	0.107	0.146	0.191	0.241	0.298									
	10-2-62	W		16.1	U	2813	1800	1250	918	703	556	450									
1-1/2" x 3/16"	P	17.4	1.350	D	0.060	0.093	0.134	0.182	0.238	0.302	0.372										
	10-4-63	W		16.7	C	2813	2250	1875	1607	1406	1250	1125									
	10-2-63	P		19.3	D	0.048	0.074	0.107	0.146	0.191	0.241	0.298									
1-1/2" x 1/8"	W	13.0	1.838	U	2700	1728	1200	882	675	533	432										
	10-4-64	P		13.7	D	0.050	0.078	0.112	0.152	0.199	0.251	0.310									
	10-2-64	W		13.5	C	2700	2160	1800	1543	1350	1200	1080									
1-1/2" x 3/16"	P	15.0	2.400	D	0.040	0.062	0.089	0.122	0.159	0.201	0.248										
	10-4-65	W		19.2	U	4050	2592	1800	1322	1013	800	648									
	10-2-65	P		20.5	D	0.050	0.078	0.112	0.152	0.199	0.251	0.310									
1-3/4" x 1/8"	W	19.8	2.838	C	4050	3240	2700	2314	2025	1800	1620										
	10-4-73	P		22.4	D	0.040	0.062	0.089	0.122	0.159	0.201	0.248									
	10-2-73	W		22.3	U	5513	3528	2450	1800	1378	1089	882									
2" x 3/16"	P	23.6	3.038	D	0.043	0.067	0.096	0.130	0.170	0.215	0.266										
	10-4-83	W		22.9	C	5513	4410	3675	3150	2756	2450	2205									
	10-2-83	P		25.5	D	0.034	0.053	0.077	0.104	0.136	0.172	0.213									
2-1/4" x 1/8"	W	25.4	3.750	U	7200	4608	3200	2351	1800	1422	1152										
	10-4-93	P		26.7	D	0.037	0.058	0.084	0.114	0.149	0.189	0.233									
	10-2-93	W		26.0	C	7200	5760	4800	4114	3600	3200	2880									
2-1/2" x 1/8"	P	28.6	4.538	D	0.030	0.047	0.067	0.091	0.119	0.151	0.186										
	10-4-103	W		28.5	U	9113	5832	4050	2976	2278	1800	1458									
	10-2-103	P		29.8	D	0.033	0.052	0.074	0.101	0.132	0.168	0.207									
3/16" Bar	W	29.1	5.538	C	9113	7290	6075	5207	4556	4050	3645										
	10-4-103	P		31.7	D	0.026	0.041	0.060	0.081	0.106	0.134	0.166									
	10-2-103	W		31.6	U	11250	7200	5000	3673	2813	2222	1800									
3/16" Bar	P	32.9	6.538	D	0.030	0.047	0.067	0.091	0.119	0.151	0.186										
	10-4-103	W		32.2	C	11250	9000	7500	6429	5625	5000	4500									
	10-2-103	P		34.8	D	0.024	0.037	0.054	0.073	0.095	0.121	0.149									

U= safe uniform load, psf - C= safe concentrated load, pfw - D= deflection, inches - E= modulus of elasticity, 29,000,000 psi - F= fiber stress, 18,000 psi

W/P-19 PANEL WIDTH (inches) Note: P-Press-Locked cross bars typically extend 1/8" each side. W-Welded cross rods may extend 1/8" each side. Panel widths do not include these extensions.

No. of Bars	2	3	4	5	6	7	8	9	10	11	12	13	14	15	16	17	18	19	20
1/8" Bar	3/4	13/8	2	25/8	31/4	37/8	41/2	51/8	53/4	63/8	7	75/8	81/4	87/8	91/2	101/8	103/4	113/8	12
3/16" Bar	13/16	17/16	21/16	211/16	35/16	315/16	49/16	53/16	513/16	67/16	71/16	711/16	85/16	815/16	99/16	103/16	1013/16	117/16	121/16
No. of Bars	21	22	23	24	25	26	27	28	29	30	31	32	33	34	35	36	37	38	39
1/8" Bar	125/8	131/4	137/8	141/2	151/8	153/4	163/8	17	175/8	181/4	187/8	191/2	201/8	203/4	213/8	22	225/8	231/4	237/8
3/16" Bar	1211/16	135/16	1315/16	131/4	153/16	153/16	167/15	171/6	1711/15	185/16	185/16	189/15	203/16	2013/16	217/16	221/16	2211/16	235/16	2315/16
No. of Bars	40	41	42	43	44	45	46	47	48	49	50	51	52	53	54	55	56	57	58
1/8" Bar	241/2	251/8	263/8	263/8	27	275/8	281/4	287/8	291/2	301/8	303/4	313/8	32	325/8	331/4	337/8	341/2	351/8	353/4
3/16" Bar	249/16	253/16	2513/16	267/16	271/16	2711/16	285/16	2815/16	299/16	303/16	3013/16	317/16	321/16	3211/16	335/16	3315/16	349/16	353/16	3513/16