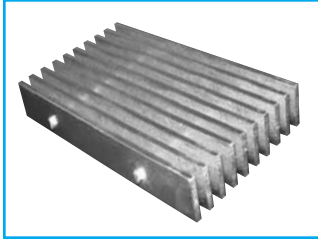


Aluminum Grating

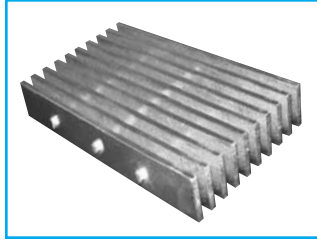
RECTANGULAR BAR SWAGE-LOCKED CLOSE MESH

1/2" Center to Center of Bearing Bars



8-SR-4

Cross Rods 4" C/C

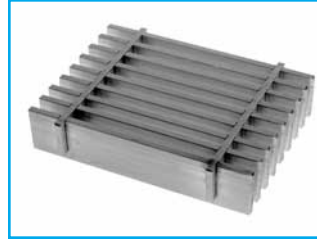


8-SR-2

Cross Rods 2" C/C

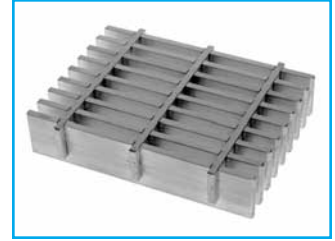
PRESS-LOCKED CLOSE MESH

1/2" Center to Center of Bearing Bars



8-AP-4

Cross Bars 4" C/C



8-AP-2

Cross Bars 2" C/C

LOAD & DEFLECTION TABLE

Bar Size	Symbol	Approx. Weight psf	Sec. Mod Per Ft. Of Width	SPAN (Length of Bearing Bar)					U	D	E	F							
				2'-0"	2'-6"	3'-0"	3'-6"	4'-0"											
3/4" x 1/8"	8-4-32	SR 3.0	0.281	U 563	360	250	184	141	0.192	0.300	0.432	0.588	0.768						
	AP 3.1	D 0.192		0.300	0.432	0.588	0.768												
	8-2-32	SR 3.4		C 563	450	375	321	281											
3/4" x 3/16"	AP 3.4	D 0.154	0.240	0.346	0.470	0.614	4'-6"	0.192	0.300	0.432	0.588	0.768							
	8-4-33	SR 4.4	U 844	540	375	276							211	167					
	AP 4.6	D 0.192	0.300	0.432	0.588	0.768	0.972												
	8-2-33	SR 4.7	C 844	675	563	482	422						375						
	AP 5.1	D 0.154	0.240	0.346	0.470	0.614	0.778						5'-0"						
	8-4-42	SR 3.9	U 1000	640	444	327	250							198					
1" x 1/8"	AP 4.0	D 0.144	0.225	0.324	0.441	0.576	0.729	0.900	0.192	0.300	0.432	0.588	0.768						
	8-2-42	SR 4.3	C 1000	800	667	571	500	444											
	AP 4.3	D 0.115	0.180	0.259	0.353	0.461	0.583	0.720						5'-6"					
8-4-43	SR 5.8	U 1500	960	667	490	375	296	240	198										
1" x 3/16"	AP 5.9	D 0.144	0.225	0.324	0.441	0.576	0.729	0.900	0.192	0.300	0.432	0.588	0.768						
	8-2-43	SR 6.1	C 1500	1200	1000	857	750	667						600	545				
	AP 6.4	D 0.115	0.180	0.259	0.353	0.461	0.583	0.720						0.871					
1-1/4" x 1/8"	8-4-52	SR 4.9	U 1563	1000	694	510	391	309	250	207	0.192	0.300	0.432	0.588	0.768				
	AP 5.0	D 0.115	0.180	0.259	0.353	0.461	0.583	0.720	0.871										
	8-2-52	SR 5.2	C 1563	1250	1042	893	781	694	625	568									
1-1/4" x 3/16"	AP 5.4	D 0.092	0.144	0.207	0.282	0.369	0.467	0.576	0.697	6'-0"	0.192	0.300	0.432	0.588	0.768				
	8-4-53	SR 7.1	U 2344	1500	1042	765	586	463	375							310	260		
	AP 7.5	D 0.115	0.180	0.259	0.353	0.461	0.583	0.720	0.871	1.037									
	8-2-53	SR 7.4	C 2344	1875	1563	1339	1172	1042	938	852						781			
	AP 8.1	D 0.092	0.144	0.207	0.282	0.369	0.467	0.576	0.697	0.829						6'-6"			
	8-4-62	SR 5.8	U 2250	1440	1000	735	563	444	360	298							250	213	
1-1/2" x 1/8"	AP 5.9	D 0.096	0.150	0.216	0.294	0.384	0.486	0.600	0.726	0.864	1.014	0.192	0.300	0.432	0.588	0.768			
	8-2-62	SR 6.1	C 2250	1800	1500	1286	1125	1000	900	818	750						692		
	AP 6.3	D 0.077	0.120	0.173	0.235	0.307	0.389	0.480	0.581	0.691	0.811						7'-0"		
8-4-63	SR 8.5	U 3375	2160	1500	1102	844	667	540	446	375	320	276							
1-1/2" x 3/16"	AP 8.8	D 0.096	0.150	0.216	0.294	0.384	0.486	0.600	0.726	0.864	1.014	1.176	0.192	0.300	0.432	0.588	0.768		
	8-2-63	SR 8.8	C 3375	2700	2250	1929	1688	1500	1350	1227	1125	1038						964	
	AP 9.5	D 0.077	0.120	0.173	0.235	0.307	0.389	0.480	0.581	0.691	0.811	0.941						8'-0"	
	8-4-73	SR 9.8	U 4594	2940	2042	1500	1148	907	735	607	510	435							375
	AP 10.2	D 0.082	0.129	0.185	0.252	0.329	0.417	0.514	0.622	0.741	0.869	1.008						1.317	
	8-2-73	SR 10.2	C 4594	3675	3063	2625	2297	2042	1838	1670	1531	1413						1313	1148
2" x 3/16"	AP 10.9	D 0.066	0.103	0.148	0.202	0.263	0.333	0.411	0.498	0.592	0.695	0.806	1.053	9'-0"					
	8-4-83	SR 11.2	U 6000	3840	2667	1959	1500	1185	960	793	667	568	490		375	296			
	AP 11.5	D 0.072	0.113	0.162	0.221	0.288	0.365	0.450	0.545	0.648	0.761	0.882	1.152	1.458					
	8-2-83	SR 11.5	C 6000	4800	4000	3429	3000	2667	2400	2182	2000	1846	1714	1500	1333				
	AP 12.2	D 0.058	0.090	0.130	0.176	0.230	0.292	0.360	0.436	0.518	0.608	0.706	0.922	1.166					
	2-1/4" x 3/16"	8-4-93	SR 12.6	U 7594	4860	3375	2480	1898	1500	1215	1004	844	719	620	475	375			
AP 12.9		D 0.064	0.100	0.144	0.196	0.256	0.324	0.400	0.484	0.576	0.676	0.784	1.024	1.296					
8-2-93		SR 12.9	C 7594	6075	5063	4339	3797	3375	3038	2761	2531	2337	2170	1898	1688				
AP 13.6		D 0.051	0.080	0.115	0.157	0.205	0.259	0.320	0.387	0.461	0.541	0.627	0.819	1.037					
8-4-103		SR 13.9	U 9375	6000	4167	3061	2344	1852	1500	1240	1042	888	765	586	463				
AP 14.3		D 0.058	0.090	0.130	0.176	0.230	0.292	0.360	0.436	0.518	0.608	0.706	0.922	1.166					
2-1/2" x 3/16"	8-2-103	SR 14.2	C 9375	7500	6250	5357	4688	4167	3750	3409	3125	2885	2679	2344	2083				
	AP 14.9	D 0.046	0.072	0.104	0.141	0.184	0.233	0.288	0.348	0.415	0.487	0.564	0.737	0.933					

U = safe uniform load, psf
 C = safe concentrated load, ptw
 D = deflection, inches
 E = modulus of elasticity, 10,000,000 psi
 F = fiber stress, 12,000 psi
Material: ASTM B-221, 6063 or 6061
Deflection: Spans and loads to the right of the bold line exceed 1/4" deflection for uniform load of 100 psf which provides safe pedestrian comfort. These can be exceeded for other types of loads with engineer's approval.
Serrated Bars: For serrated grating, the depth of grating required for a specified load is 1/4" deeper than that shown in the table.
General: Loads and deflections are theoretical and based on static loading.
Finish: Mill finish unless otherwise specified.

SR/AP-8 PANEL WIDTH (inches)

Note: Includes 1/4" (1/8" each side) for extended cross rods on swage-locked (SR) and extended cross bars on press-locked (AP).

No. of Bars	2	3	4	5	6	7	8	9	10	11	12	13	14	15	16	17	18	19	20	21	22	23	24	25	26	27	28	29
1/8" Bar	7/8	1 1/8	1 1/4	1 3/8	1 1/2	1 5/8	1 3/4	1 7/8	1 9/8	1 11/8	1 5/4	1 13/8	1 1 1/2	1 1 1/4	1 1 3/8	1 1 1/2	1 1 5/8	1 1 7/8	1 1 9/8	1 1 11/8	1 1 13/8	1 1 1 1/2	1 1 1 1/4	1 1 1 3/8	1 1 1 1/2	1 1 1 5/8	1 1 1 7/8	1 1 1 9/8
3/16" Bar	15/16	1 1/16	1 1/8	1 1/4	1 1/2	1 5/8	1 3/4	1 7/8	1 9/8	1 11/8	1 5/4	1 13/8	1 1 1/2	1 1 1/4	1 1 3/8	1 1 1/2	1 1 5/8	1 1 7/8	1 1 9/8	1 1 11/8	1 1 13/8	1 1 1 1/2	1 1 1 1/4	1 1 1 3/8	1 1 1 1/2	1 1 1 5/8	1 1 1 7/8	1 1 1 9/8
No. of Bars	30	31	32	33	34	35	36	37	38	39	40	41	42	43	44	45	46	47	48	49	50	51	52	53	54	55	56	57
1/8" Bar	1 1/2	1 1 1/4	1 1 3/8	1 1 1/2	1 1 5/8	1 1 3/4	1 1 7/8	1 1 9/8	1 1 11/8	1 1 13/8	1 1 1 1/2	1 1 1 1/4	1 1 1 3/8	1 1 1 1/2	1 1 1 5/8	1 1 1 7/8	1 1 1 9/8	1 1 1 11/8	1 1 1 13/8	1 1 1 1 1/2	1 1 1 1 1/4	1 1 1 1 3/8	1 1 1 1 1/2	1 1 1 1 5/8	1 1 1 1 7/8	1 1 1 1 9/8	1 1 1 1 11/8	1 1 1 1 13/8
3/16" Bar	1 1/16	1 1/8	1 1/4	1 1/2	1 5/8	1 3/4	1 7/8	1 9/8	1 11/8	1 5/4	1 13/8	1 1 1/2	1 1 1/4	1 1 3/8	1 1 1/2	1 1 5/8	1 1 7/8	1 1 9/8	1 1 11/8	1 1 13/8	1 1 1 1/2	1 1 1 1/4	1 1 1 3/8	1 1 1 1/2	1 1 1 5/8	1 1 1 7/8	1 1 1 9/8	1 1 1 11/8
No. of Bars	58	59	60	61	62	63	64	65	66	67	68	69	70	71	72													
1/8" Bar	1 1 1/2	1 1 1/4	1 1 3/8	1 1 1/2	1 1 5/8	1 1 3/4	1 1 7/8	1 1 9/8	1 1 11/8	1 1 13/8	1 1 1 1/2	1 1 1 1/4	1 1 1 3/8	1 1 1 1/2	1 1 1 5/8	1 1 1 7/8	1 1 1 9/8	1 1 1 11/8	1 1 1 13/8	1 1 1 1 1/2	1 1 1 1 1/4	1 1 1 1 3/8	1 1 1 1 1/2	1 1 1 1 5/8	1 1 1 1 7/8	1 1 1 1 9/8	1 1 1 1 11/8	1 1 1 1 13/8
3/16" Bar	1 1/16	1 1/8	1 1/4	1 1/2	1 5/8	1 3/4	1 7/8	1 9/8	1 11/8	1 5/4	1 13/8	1 1 1/2	1 1 1/4	1 1 3/8	1 1 1/2	1 1 5/8	1 1 7/8	1 1 9/8	1 1 11/8	1 1 13/8	1 1 1 1/2	1 1 1 1/4	1 1 1 3/8	1 1 1 1/2	1 1 1 5/8	1 1 1 7/8	1 1 1 9/8	1 1 1 11/8